

GILGEN SLX-M SLIDING DOOR DRIVE UNIT, COMBINED WITH PSXP PROFILE SYSTEM

The ideal combination for a wide range of applications

The Gilgen SLX-M sliding door drive unit is a universally applicable drive system with state-of-the-art functions. It is designed to offer guaranteed, reliable functioning in a wide range of highly-demanding applications. The elegantly-designed sensor system is built into the header profile.

Versatile usage

- The ideal combination for a wide range of uses
- The vertically interlocking configuration of the door leaves offers guaranteed robustness and protection from draughts
- A robust, elegantly-designed door (ideal for large facades)
- Reliable, long-term operation
- TÜV-approved, and conforms to the relevant norms and standards (such as EN 16005, DIN 18650)

Possible applications

- Single and bi-parting sliding doors
- Emergency-exit function (redundant configuration)
- With side panels
- With glazed overhead panel
- With pocket screen
- Ideal for buildings with high levels of pedestrian traffic (such as supermarkets, railway stations, airports, hospitals, etc.)
- Standard locking-system built into drive mechanism
- FLUVERI multi-point locking (integrated into door leaf) manual/automatic
- With floor lock
- Flush bottom guide rail or fixed point guide
- Can be attached to the door lintel or wall
- Self-supporting, with pillar reinforcement

Glazing and infill options

- Safety glass ESG / VSG
- Insulating glass
- Glass thickness: 6 to 24 mm
- Infill's made of plastic, aluminium and wood

Surface finish of aluminium profiles

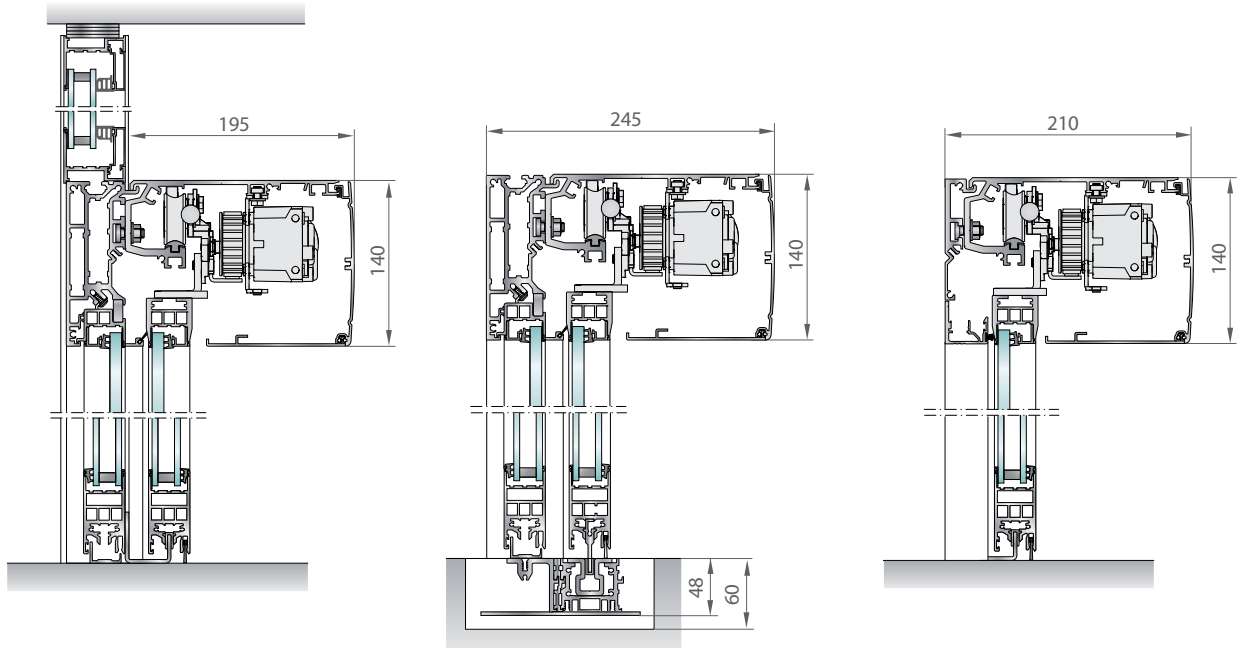
- Anodised (coloured or colourless)
- RAL colours, Polyester powder coating (PPC)



A combination of Gilgen SLX-M drive unit and PSXP profile system provides a complete system that is both versatile and robust



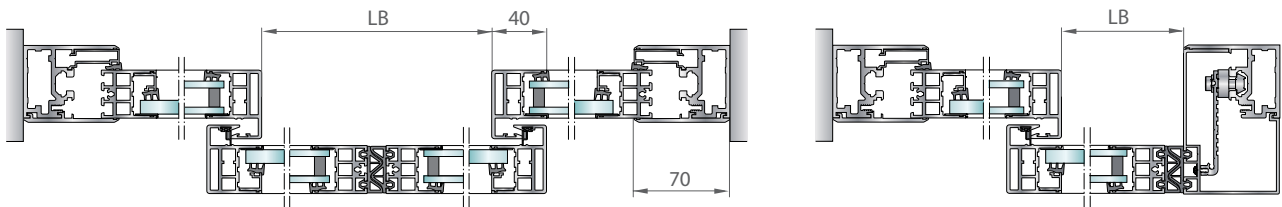
Gilgen SLX-M sliding door drive unit, combined with the PSXP profile system



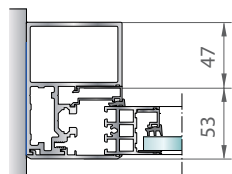
Robust self supporting construction with optional glazed overhead panel for free standing drive system installation and easy integration into existing facades.

Single and bi-parting systems with side panel and bottom guide rail

Single and bi-parting systems without side panel, but with fixed point guide



Jamb standard



Jamb reinforced

Range of application for Gilgen SLX-M sliding door drive unit with PSXP profile system

		Bi-parting	Single door leaf
Sliding door SLX-M	Clear opening width	800 - 3000 mm	700 - 2000 mm
	Max. door leaf weight	2 x 150 kg	150 kg
	Clear height	standard 2100 mm / possible up to 3000 mm	
SLX-M redundant	Clear opening width	900 - 3000 mm	950 - 2000 mm
	Max. door leaf weight	2 x 150 kg	150 kg
	Clear height	standard 2100 mm / possible up to 3000 mm	